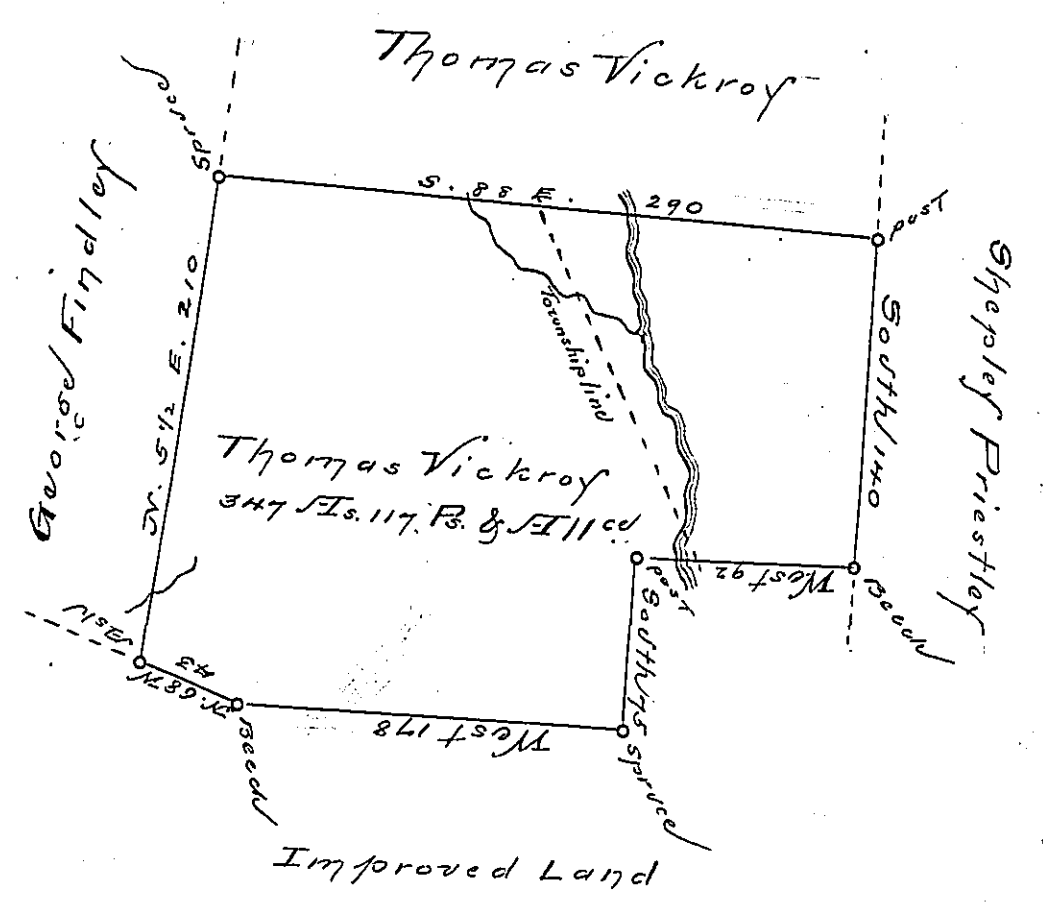


1.8  
2.7  
26  
6



Situated on Salt Lick Run on both sides of the line between Conemaugh and  
Somershill Townships in Cambria County, and Surveyed the 20<sup>th</sup> day of September  
1823 in pursuance of a Warrant dated the 13<sup>th</sup> of September 1823.

To Samuel Cochran Esq. }  
Surveyor General } Isaac Proctor D.S.

Beginning at a Spruce thence by land of Thomas Vickroy  
S. 88 E. 33 water out

112 water in

185 Salt Lick in

290 Post thence by Shepley Priestley

South 140 Branch

West 80 Salt Lick out

92 Post

South 75 Spruce

West 178 Branch

N. 68 W. 43 Ash thence by George Findley

N. 5 1/2 E. 26 water out

210 Spruce place of Beginning

IN TESTIMONY that the above is a copy of the original remaining on file in the  
Department of Internal Affairs of Pennsylvania, made con-  
formably to an Act of Assembly approved the 16th day of  
February, 1833, I have hereunto set my Hand and caused  
the Seal of said Department to be affixed at Harrisburg, this

— SIX<sup>th</sup> — day of — February — 1895.

*James W. Fatta*  
Secretary of Internal Affairs.